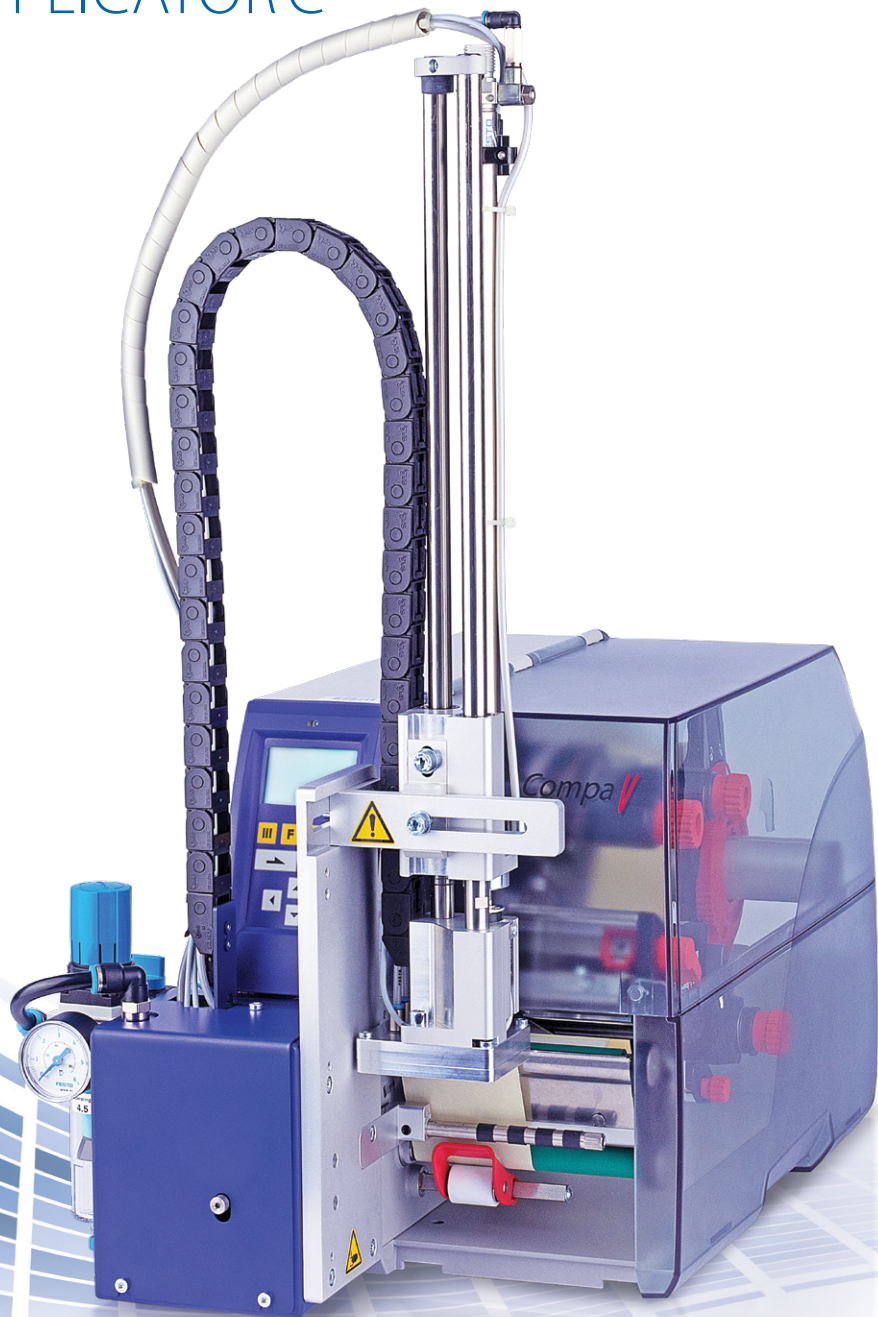


COMPA V + APPLICATOR C

The perfect addition
to our all-rounder



Compa V+Pneumatic Applicator C

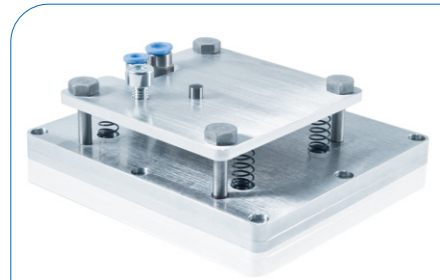
Modular composition for high versatility of use.

With Compa V, we set a milestone in the matters of versatility and ease of use. We have now expanded this system to include the Pneumatic Applicator C unit for stamping, blowing and rolling labels on. For our customers, that means: the desired label is applied to your product directly after printing. Labeling really is that simple.



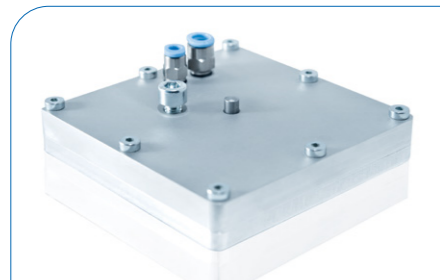
Technical data	Stamp on	Blow on	Roll on
Label width ¹	25 - 176 mm		
Label height ¹	25 - 200 mm	25 - 100 mm	80 - 200 mm
C220 Cylinder stroke Pad stroke below printer	220 mm 86 mm		
C300 Cylinder stroke Pad stroke below printer	300 mm 166 mm		
C400 Cylinder stroke Pad stroke below printer	400 mm 266 mm		
Compressed air pressure	4.5 bar		
Product surface	flat		
Product height variable	•		•
Product height fixed	•	•	•
Product fixed	•	•	
Product linear movement		•	•
Compressed air control / vacuum control	available		
Service unit	filter regulation with manometer and shut-off valve		
Voltage supply / current supply	by label printer Compa V		
Applicator weight	4.5 kg + pad		

¹ = depending on the selected printer Compa V and the pad



Tamp pad

During the print and apply cycle the product remain fixed. The universal tamp is covered by a foil. According to the size of the label the holes can be pierced. The tamp pads are customized to the dimensions of the label sizes on request.



Blow pad

For non-applying pressure to sensitive products, the label can be blown onto the product with the supporting air jet stream. The print and apply cycle performs in a fixed position or in a linear movement of the product. The blow pad moves to a preadjusted position approx. 10 mm away from the product.



Roll-on pad

In the starting position the label is forwarded until touching the roller of the roll-on pad. At the labelling position the roller is pressed onto the product. Then the label is applied and rolled on by the movement of the products.

	Compa V 103/8	Compa V 104/8	Compa V 106/12	Compa V 106/24	Compa V 108/12	Compa V 162/12
Printing						
Print resolution	203 dpi	203 dpi	300 dpi	600 dpi	300 dpi	300 dpi
Print speed (max)	300 mm/s	300 mm/s	300 mm/s	150 mm/s	300 mm/s	250 mm/s
Print width (max)	104 mm	104 mm	105.7 mm	105.6 mm	108.4 mm	162.6 mm
Passage width (max)	120 mm	120 mm	120 mm	120 mm	120 mm	180 mm
Printing principle	TT/TD ¹	TT ²	TT ²	TT ²	TT/TD ¹	TT/TD ¹
Labels						
Labels, continuous rolls	paper, synthetics					
Material weight (max)	max. 220 g/m ² (larger on demand)					
Liner width (min)	25 mm					50 mm
Label height (max)						
Standard	6000 mm	6000 mm	3000 mm	750 mm	3000 mm	2000 mm
Dispenser mode	200 mm	200 mm	200 mm	200 mm	200 mm	200 mm
Roll diameter (max)	205 mm					
Core diameter	Ø 40 mm					
Standard	Ø 40 mm					
Additional dimensions	Ø 38.1 up to Ø 76 mm (optional additional cores possible)					
Winding	outside or inside					
Label sensor	transmission and reflexion from below					
Transfer ribbon						
Ink	outside or inside					
Core diameter	25.4 mm / 1"					
Roll diameter (max)	Ø 90 mm					
Length (max)	600 m					
Width (max)	114 mm					170 mm
Internal rewinder for printers						
Outside diameter	142 mm					
Core diameter	Ø 40 mm					
Winding	outside					
Fonts and bar codes						
Font types	6 bitmap Fonts 8 vector fonts/TrueType fonts 6 proportional fonts other fonts on demand					
1D bar codes	2/5 Industrial, Codabar, Code 128, Code 128A, Code 128B, Code 2/5 interleaved, Code 39, Code 39 extended, Code 93, EAN 13, EAN 8, EAN Add-on, GS1-128, Identcode, ITF 14, Leitcode, Pharmacode, PLANET (Postal Alpha Numeric Encoding Technique), PostNet, PZN 7, PZN 8, UPC-A, UPC-E, USPS Intelligent Mail					
2D bar codes	Aztec Code, CODABLOCK F, DataMatrix, GS1 DataMatrix, MAXICODE, PDF 417, QR Code					
GS1 bar codes	GS1 DataBar Expanded, GS1 DataBar Limited, GS1 DataBar Omnidirectional, GS1 DataBar Stacked, GS1 DataBar Stacked Omnidirectional, GS1 DataBar Truncated					
Dimensions Compa V + Applicator						
Width x depth	338 x 554 mm					398 x 554 mm
Height C220 C300 C400	540 620 720 mm					
Weight	14.5 kg + pad					18.5 kg + pad
Interfaces						
Serial	RS-232C (bis 115.200 Baud)					
USB	2.0 High Speed Slave					
Ethernet	10/100 Base T, LPD, RawIP-Printing, DHCP					
2 x USB Host	on the back for: keyboard, USB memory stick					
Operating data						
Power supply	110 ... 240 V AC / 50-60 Hz					
Max. power consumption	200 VA					
Nominal current	2.5 A					
Operating temperature	5 ... 35 °C					
Relative humidity	max. 85 % (non-condensing)					

¹ = Thermal transfer / thermal direct . ² = Thermal transfer

Label applicator



Thermal printhead



Config Tool



Labelstar Office



Loftware



Local retailer

Branches:

Sales office Bavaria

Marienplatz 8a . 83043 Bad Aibling
Phone +49 8061 3498888 . rstreck@carl-valentin.de

Sales office Spain

Calle historiador Vedia 14 5ºB . 15004 La Coruña
Phone +34 881 103163 . Mobile +34 609022 241 . mllano@carl-valentin.es

Sales office Switzerland

Swiss Business Haus . Moosackerstraße 75 . 8105 Regensdorf
Phone +41 61 9739641 . Mobile +41 79 7448436 . info@carl-valentin.ch



Carl Valentin GmbH
Neckarstraße 78–86 u. 94
78056 Villingen-Schwenningen
Phone +49 7720 9712-0
info@carl-valentin.de . www.carl-valentin.de

