



Print & Apply Labeling

# Videojet 9560

Precise, efficient performance for labeling cases, boxes and shrink wrap



**VIDEOJET**

**RUNNING** 8:51 AM 8/21/2021

Home

JOB MM - CPF - 6pk - 4x6  
Cherry Pie Filling (32oz, 6 packs)

Performance	Consumables
Throughput 0 p/m	Labels
Batch Count 0	Rolls
Total Count 175	Start Products

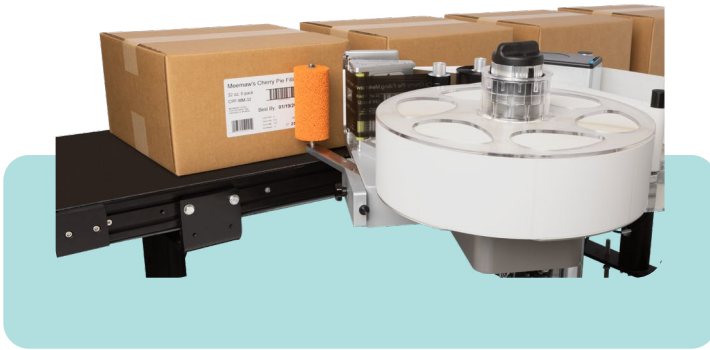
**9560**

# An expert labeling solution

Experience the evolution of the industry's proven Direct Apply labeling system.

## Precision meets intelligence

Designed for the modern pace of high-speed labeling with industry-proven technology delivering consistent reliability and effortless operation. Without the need for plant air and complex setups, this advanced system offers a straightforward user interface and state-of-the-art Wi-Fi connectivity to streamline your end-of-line processes with unmatched simplicity and efficiency.



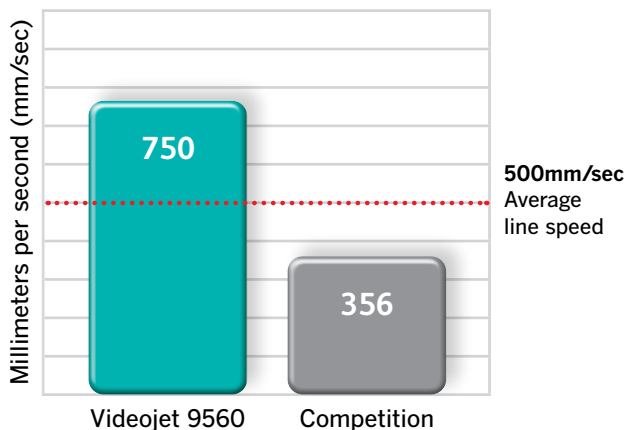
### Why Direct Apply?

Simultaneously print and apply a label onto a passing pack at the speed of the conveyor, without the need for a tamp applicator.

- Eliminate label jams for common top or side labeling applications
- Up to 150 packs per minute (label size dependent) without the use of a tamp applicator
- Maintain throughput, even when the packs are accumulated
- No compressed air needed, eliminating both the installation cost and the ongoing running costs

#### Print & apply pack labeling speeds\*

\*@300dpi resolution, standard 6x4" label





## What is unique about the 9560 design?

Simplify communication and integration with embedded Wi-Fi 

Precise and automatic control of the entire system thanks to **Intelligent Motion™**, with no slipping clutch, nip rollers or manual adjustments

Our user interface delivers a single point of set-up and control for the whole machine

Simple web path enables label and ribbon change in less than 60 seconds

Save time with collapsible mandrel for quick label changeovers

Reduce set-up time and errors while maximizing availability from a proven print engine and label tension control system

Seamless connectivity with warehouse management systems and advanced emulation capabilities 

Industry-leading near edge printhead technology allows for high-speed print and apply labeling

# A consistent labeling solution

Remove end-of-line inefficiencies and costs in your labeling operations.



**Intelligent Motion™**

Traditional print and apply labelers often fail to meet the performance demands of today's packaging operation. To achieve a breakthrough design, you first need to understand where things might go wrong.

Patented Intelligent Motion™ technology delivers automatic control of the system and eliminates the added parts and adjustments that can make other labeling machines fail.

The 9560 reduces the 5 most common reasons for downtime\*

1. Label jams
2. Web jams
3. Ribbon breaks
4. Mechanical adjustments
5. Mechanical failures

\* Compared to tamp applications

## How does Intelligent Motion™ technology eliminate common pain points?

- ✓ A direct drive controls label speed and position without clutches, rollers or adjustments
- ✓ Electronic supply reel automatically adjusts and maintains tension irrespective of speed and label size from start to end of reel
- ✓ Printhead pressure is automatically regulated to help ensure optimum print quality and printhead life
- ✓ Precise ribbon control enables a clutch-less ribbon drive and ribbon save mode

# An **adaptable** labeling solution

With ambitious production goals, with seamless connectivity and compatibility.



## Key benefits:

- Modular design allows for use of applicators if needed
- Simple and fast integration with OEM packaging systems
- Reduce operator set up errors and job selection with leader/follower functionality
- Switch to the 9560 without having to re-build previous job files and get up and running fast
- Dual printer synchronization feature allows for zero downtime



## Less wires, less mess

The Videojet 9560 includes embedded Wi-Fi\* for secure remote access and analytical capabilities.

*\*Subject to availability in your country*

## Fluent in your factory's communication language

### Label design

Compatible with any label design software including CLARiSOFT<sup>®</sup>, BarTender<sup>®</sup>, NiceLabel<sup>®</sup> TEKLYNX<sup>®</sup>, Software and others.

### Emulation

Replicate the behavior of other systems including Zebra<sup>®</sup> (ZPL), SATO<sup>™</sup> (SBPL) and CoLOS<sup>™</sup> (DCP and CIMCOMMS).

### Control

Designed for seamless integration into production and control networks using EtherNet/IP<sup>™</sup> and ProfiNet<sup>®</sup> protocols.

EtherNet/IP<sup>™</sup>



# An easy-to-use labeling solution

Simple, efficient user interface, reducing risk of operator error.



## Key benefits:

- Only one simple 8-inch user interface for easy control
- Onboard support videos guide the operator through routine maintenance tasks
- Reduce operator intervention with rapid job selection using bar code scanner
- Flexibility to position screens remotely
- Ability to access the interface on a connected network, including via mobile devices
- Eliminate data entry errors and reduce operators touches, helping to ensure products are coded correctly

## Access the printer, anywhere.

### Real-time remote visibility

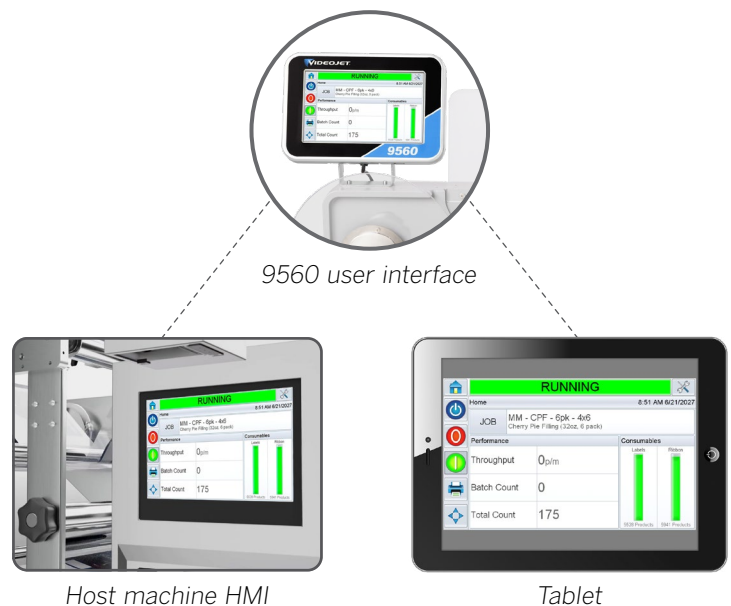
VideojetConnect™ Remote Service\* provides real-time information on printer issues, allowing both Videojet experts and your technicians to monitor equipment status, troubleshoot issues, and improve long-term performance.



*\*Subject to availability in your country*

### Remote interface control

Establish preferred point of control with web server – in the office, on the line or anywhere in your plant network.





# Videojet LifeCycle Advantage™

The Videojet 9560 leverages advanced analytics, remote connectivity, and the largest service footprint in the industry to maintain our uptime commitment, improve operations over time, and help you recover in minutes from unplanned interruptions.



## Improve

- Leverage data across a fleet of connected printers to continually optimize printer performance
- Remote service data can be used to identify operational improvements and help you run your plant better



## Maintain

- Get optional on-demand remote training at the touch of a button
- Service packages for periodic preventive maintenance help keep your printer in peak condition
- Configurable remote alerts notify customers of pending faults and possible issues to allow proactive resolution between production shifts



## Recover

- Many repairs can be resolved with the assistance of the Videojet team of experts in minutes, and without waiting for on-site service
- Benefit from the largest global service organization in the industry to support your on-site needs when necessary

## Innovative technology optimized to help you meet your sustainability objectives

- No plant air needed. Aligns with many manufacturing facilities' sustainability initiatives reducing energy usage, and thus lowering carbon dioxide (CO<sub>2</sub>) emissions.
- Innovative technology designed to reduce waste through smart ribbon and label controls.
- Remote service capabilities reduce the need for service visits.

The Videojet labeling portfolio delivers the agility to stay ahead of constantly evolving regulatory and sustainability requirements and the resulting supply chain needs for waste reduction, recycling, and optimization of transportation resources. With our comprehensive labeling solutions, you can reduce your environmental impact and optimize your supply chain while maintaining the highest levels of efficiency and reliability.



# Videojet® 9560

## Print & Apply Labeler

### Application method

Direct Apply (standard) with Intelligent Motion™ Label Drive  
Optional applicators: Front of Pack, Rear Corner Wrap, and Telescopic Tamp (see separate data sheet)

### Print technology

Thermal Transfer printing with Intelligent Motion™ Ribbon Drive and Direct Thermal 53mm, 76mm, 107mm and 160mm printhead versions

### Print resolution

300dpi / 200dpi emulation mode

### Printhead health monitoring

Tool-free quick release printhead replacement

### Print speed

<4.0" (10.2cm) label width up to 19.6in/sec (500mm/sec) in standard mode and up to 29.5in/sec (750mm/sec) in high-speed mode

>4.0" (10.2cm) label width up to 15.7in/sec (400mm/sec) in standard mode  
Speeds are dependent on label size and application

### Throughput

Typically 150 packs per minute based on label length and case size  
Faster throughput may be possible dependent on specific application details

### Ribbon specification

Width: 2.2" (55mm), 3.0" (76mm) and 4.3" (110mm) (standard) and 6.4" (162mm)  
Capacity: Up to 830m, including automatic ribbon save (< 1mm ribbon gap between successive prints irrespective of label size or speed)  
Low Ribbon and End of Ribbon detection with predicted changeover time built in as standard

### Label specification

Width/length: 1.6" to 6.5" / 2.0" to 11.8" (40 to 165mm / 50 to 300mm)  
Capacity: Up to 400mm spool diameter (typically delivers over 9000 typical GS1 bar code labels per roll)  
Low Labels and End of Label Reel detection, with predicted changeover time built in as standard  
Automatic adjustment for label/backing type and label size  
1GB on-board label database, sufficient for 62,000 typical GS1 bar code label designs

### Print capabilities

Full downloadable font support using TrueType® fonts (including multiple languages and Unicode support); fixed, variable and merged text fields; flexible date/time formats; flexible shift code formats; auto best before date calculations and concession management; calendar rules; auto incrementing/decrementing counters; multiple graphic formats supported (up to maximum print area); database linked fields; scalable text and text blocks

### Bar codes supported

EAN 8, EAN 13, UPC-A, UPC-E, Code 39, GS1-128, Code 128, ITF, RSS (including 2D composite codes); others available upon request

## Need labels for your label applicator?

**Marsh Label Technologies** provides standard, specialty, and custom labeling solutions. A Videojet affiliate company, **Marsh** works directly with Videojet in testing and qualifying label materials to provide maximum performance for 9560 Print and Apply users.

Contact: [info@marshlabel.com](mailto:info@marshlabel.com) / (800) 975-3444

### Connectivity

Ethernet, Power-over-Ethernet, RS232, Configurable I/O (24V, PNP and volt free)  
USB (for backup/restore and label upload), remote Control Videojet 9560 via a web browser

### Communications protocols

Compatible with Videojet CLARISUITE™  
Videojet binary and simple-ASCII protocols  
Compatible with any label design software which supports Zebra or Sato print engines  
Zebra (ZPL), Sato (SBPL) and Markem-Imaje (Cimcomms, DCP) protocol support  
EtherNet/IP™  
PROFINET®

### Interface

CLARITY™ Controller with interactive on-board video tutorials

### Language capabilities

Arabic, Bulgarian, Czech, Danish, English, German, Greek, Finnish, French, Hebrew, Hungarian, Italian, Japanese, Korean, Dutch, Norwegian, Polish, Portuguese, Romanian, Russian, Serbian, simplified Chinese, Slovak, Spanish, Swedish, Thai, Turkish, Traditional Chinese, Vietnamese

### Air consumption

No air required for standard Direct Apply labeling

### Power consumption

90 – 260VAC (115W at 50 packs per minute)

### Operating environment

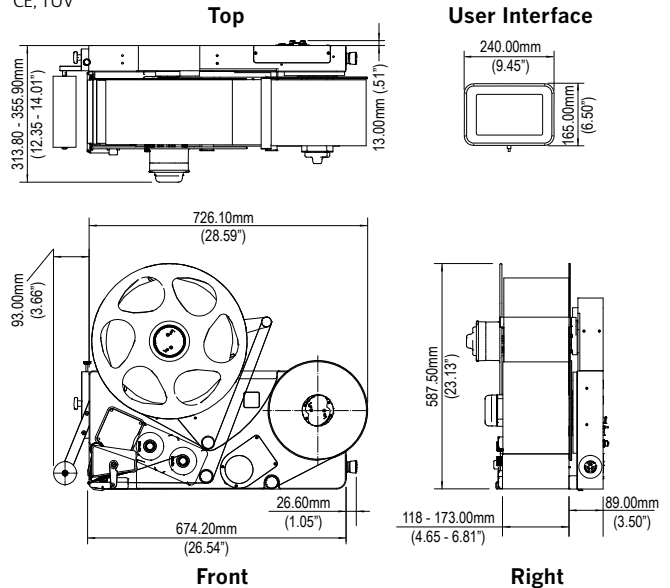
Temperature Range: 41-104°F (5-40°C)  
Humidity: 20 - 85% Relative, non-condensing

### Weight

88.2lbs (40kg) (max, excluding ribbon and labels)

### Applicable certifications

CE, TUV



**New printer quote 866-871-3226**

Order supplies [shop.videojet.com](http://shop.videojet.com)

Call **800-843-3610**

Email [info@videojet.com](mailto:info@videojet.com)

or visit [www.videojet.com](http://www.videojet.com)

Videojet Technologies Inc.

1500 Mittel Blvd. Wood Dale IL 60191 / USA

©2024 Videojet Technologies Inc. — All rights reserved.

Videojet Technologies Inc.'s policy is one of continued product improvement. We reserve the right to alter design and/or specifications without notice.

Part No. SL000730

br-9560-us-0624

Printed in U.S.A.

